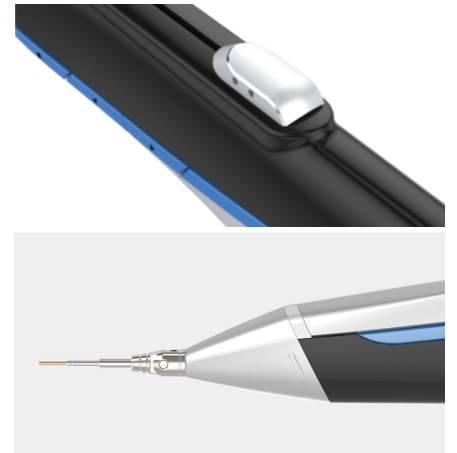




# K2 MOBILE™

LASER Engineering

It's more than portable. It's pocketable!



# Features



- Stable output power by HECOSA™ Technology  
3.5W Continuous wave  
6W Pulse mode



- Intra-oral illumination

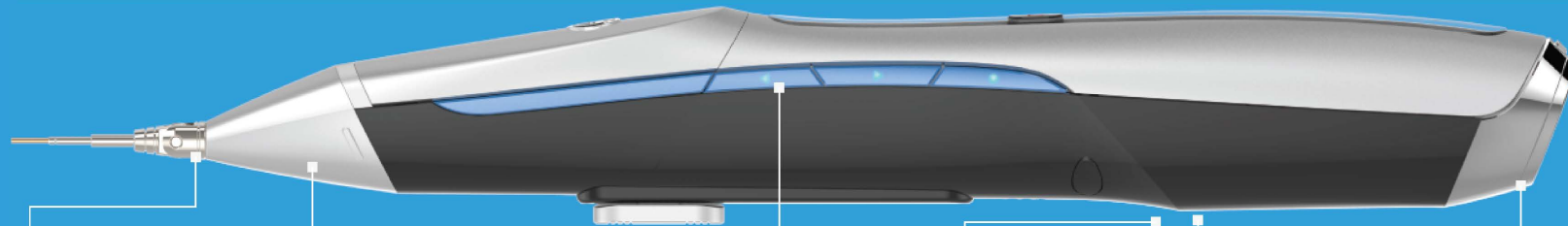
- No powercord and no footpedal
- Soft button technology
- Auto emission button



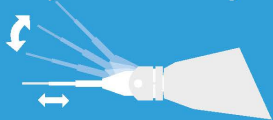
- Bright & clean OLED display
- Gravity sensor for both hands

- Ideal weight and size for handheld device  
-19cm, 108g

- Long lasting battery life  
-1700mAh



- Various reusable tips (auto clvable) for endo, perio, surgery Tx, etc
- Least consumables
- Adjustable fiber length



- Head cap detachable and auto clavable



- World first movable fiber for least consumables and versatile usages



- Easy menu navigation



- Voice confirmation
- User interactive



- Fatigue-free and Ergonomic design (2014/2015 Good Design Award Winning)



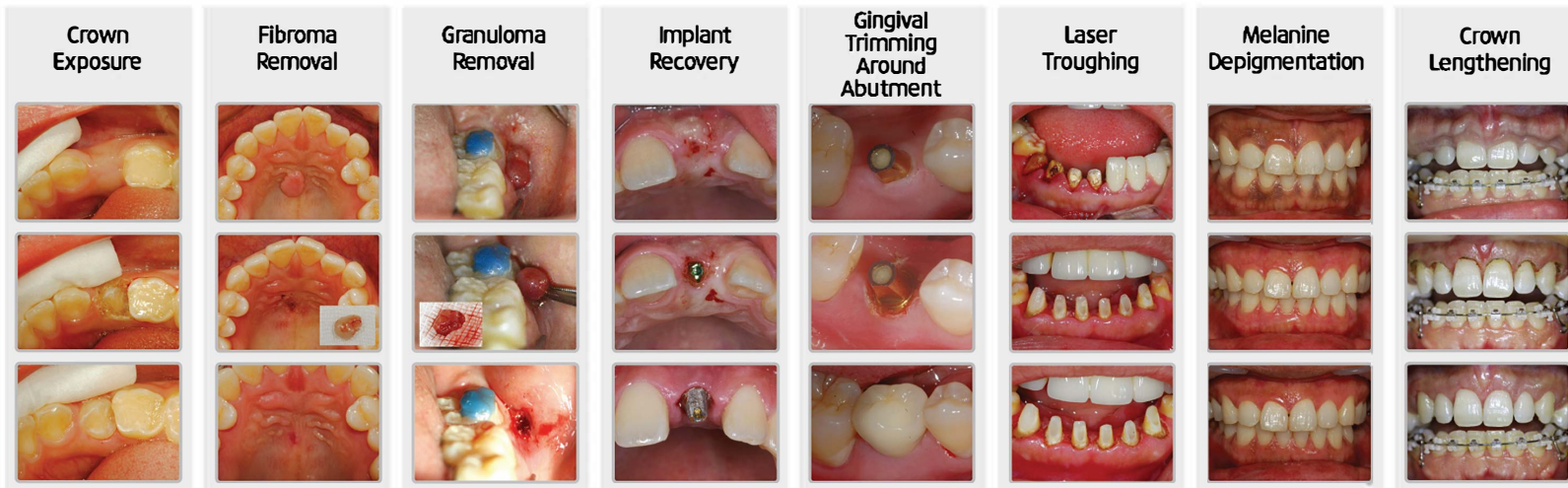
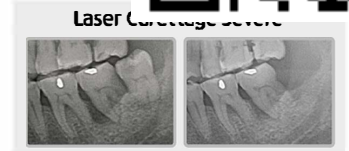
- Fiber cleaver inside Cleaver blade to cut optic fiber for least consumables

Cleaver blade



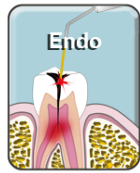


# Some sample pictures of clinical cases



And more

# Application



Apical Abscess Treatment

Root Canal Sterilization

Direct Pulp Capping

Pulpotomy



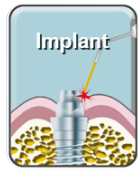
Laser Curettage Mild

Laser Curettage Moderate

Laser Curettage Severe

Pre-Scaling

Post Scaling



Implant Recovery

Gingival Trimming Around Abutment

Peri-Implantitis

Laser Osseointegration



Gingivectomy

Vestibuloplasty

Frenectomy

Fibroma Removal

Operculectomy

Incision & Drainage



Aphthous-Ulcers

Laser Troughing

Dentin Hypersensitivity

Laser Tooth Whitening

Hemostasis

Bactericidal Effect



Biostimulation

Orthodontic Pain Relief

TMJ Pain Relief

Laser Sedation

Melanine Depigmentation



## Specification

Laser medium : diode laser  
Wavelength :  $980 \pm 10$  nm  
Guiding light : 635nm(Red)  
Output power : 3.5W CW / 6W Pulse  
Laser emission mode : CW, Coolpulse1, Coolpulse2  
Weight : 108g with battery inside  
Battery : Rechargeable lithium-ion battery 3.7VDC, 1700mAh  
Dimension : 195mm(length) X 23mm(diameter)



## Charging Station

Dimension : 160 X 90 X 38 (mm)  
Port : 4 batteries charging port  
Communication : LED charging indicator



SINCE 2002  
**HULASER**  
LASER SCIENCE FOR HUMANS

#1110, Daerung Technotown 17, 25, Gasan digital 1-ro, Geumcheon-gu, Seoul 08594, Korea  
T +82-2-3012-5678 F +82-2-544-6540 E sales@hulaser.com W www.k2lasers.com