



27, Sanseong-ro 92beon-gil, Sangdang-gu, Cheongju-si, Chungcheongbuk-do, Korea
Tel. 82-43.298.9775 Fax. 82-43.298.9777
Email. info@nexobio.com Homepage. [Http://www.nexobio.com](http://www.nexobio.com)



Natural Esthetics Reliability



**Realizing Successful
Business Activity**

**The 1st Company Growing up
with Customer**





CONTENS

T Com	03
T Com Flow	04
Transcen Temp C&B LC	05
Transcen Temp In&Onlay LC	06
T Core	07
Trantemp	08

Transeal F	09
MTA Cem	10
Transcen Etchant	11
T Bond	12
T Cem Implant	13
T Cem NE	14
T EDTA Cream	15
T STAT	16
T Block	17
Soft-Dam	18



T Com

Nano-hybrid Composite Resin



T Com is a new nano-hybrid universal composite that combines low shrinkage and high strength in a unique way. This material can adapt uniquely to the colour of the surrounding tooth structure and features an outstandingly natural look.

Indications

- Direct restorations of classes I, II, III, IV and V
- Core-build up
- Diastema closures
- Composite and porcelain repairs

Benefits

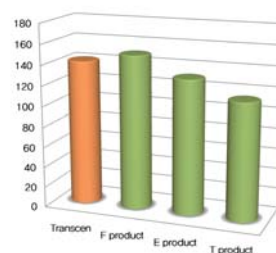
- Low shrinkage stress
- Pronounced chameleon effect
- Non-Sticky, Non-slumping
- Stability and easy sculptability offer excellent handling
- Excellent shade match with the surrounding tooth
- Very good polishability

Package

• T Com Kit

5 eaX 4g Syringes Shade(A1, A2, A3, A3.5, B2)
1 Bottle @ 5g T Bond
1 Syringe @ 3g Etchant

T Com Physical properties



Flexural strength was determined per ISO 4049: Polymer based restorative.

• T Com Refill

1 eaX 4g Syringe
Syringe Shade(A1, A2, A3, A3.5, B1, B2, B3, OA2, WT, I, A2E)



T Com Flow

Flowable Nano-hybrid Composite Resin



T Com Flow optimally enhances the performance of T Com in clinical situations, in which precise adaptation to the tooth is only attainable using a flowable material. Its variable consistency ensures that you are always in control of the material. T Com Flow can be used on its own or in combination with T Com. All 14 shades of T Com Flow are perfectly matched to the Vita Shades.

Indications

- Restoration of invasive cavity
- Cavity liner for direct restoration
- Pit and fissure sealing
- Repair acrylic temporary materials

Benefits

- Shade are optimally matched to VITA
- Flow on demand handling
- Filled with 40 nano sized filler for excellent polishability
- Very good polishability
- Excellent radiopacity
- Low shrinkage and high flexural strength

Package

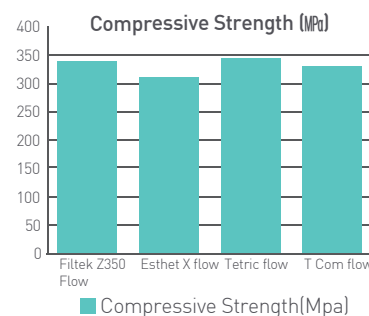
- **T Com Flow Kit**
6 eaX 2g Syringes Shade(A1, A2, A3, A3.5, B2, A2E)
- **T Com Flow Refill**
Syringe (2g*2ea)
Dispensing tip 10ea
Shade(A1, A2, A3, A3.5, A4, B1, B2, B3, C2, OA2, OA3, Wt, I, D2, A2E, Blue)

Clinical case

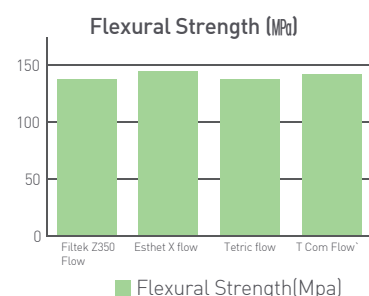


Posterior

Anterior



T Com Flow has statistically higher compressive strength



Flexural strength was determined per ISO 4049: Polymer-based restorative.



Transcen Temp C&B LC

Light Cured Temporary Crown and Bridge resin



Transcen Temp C&B LC is a new light-cured, single-component, sculptable composite resin for temporary inlays, onlays, crowns, veneers and bridges. Each Transcen Temp C&B LC putty stick contains enough material to fabricate approximately 60 average size crowns.

Indications

- Temporary Crown and Bridge

Benefits

- No methyl methacrylate (MMA Free)
- Single-component light-cured temporary resin
- Sculptable ideal consistency and none sticky
- Low shrinkage
- Delivered as a stick
- Strong and Durable

Package

- 1 Pack (15gX3ea)
- Shade A1, A2, A3

Clinical Cass



Anterior Posterior Crown and Bridge Case

Usage





Transcen Temp In&Onlay LC

Light Cured Temporary Inlay and Onlay resin



Transcen Temp In&Onlay LC are light-curing single-component materials for filling of temporary inlay and onlay. Transcen Temp In&Onlay LC is recommended for deep inlay and onlay preparations with parallel walls as well as for sealing implant screw access canals.

Indications

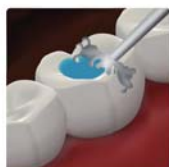
- Good adhesion to tooth structure
- Easy to remove in one piece
- Elasticity
- Fast curing and high curing depth
- No stickiness to instruments
- Minimal marginal gap formation and water absorption
- Low polymerization shrinkage

Package

- 1 Pack (2.5gX3ea)
- Shade Yellow , Blue



1. Preparation cavity



2. Cleaning and dry



3. Apply



4. Light Curing



5. 6~7days



6. Removal



T Core

Core build-up and post cementation



T Core is strong and reliable core build-up material created with nano filler. Dual curing-material can be light cured, and additional chemical cure assures that the material can be bulk filled, saving time consuming layering. It is available in the Automix system with 3 shades (A3, Blue and White)

Indications

- Core-builds
- Root post cementations

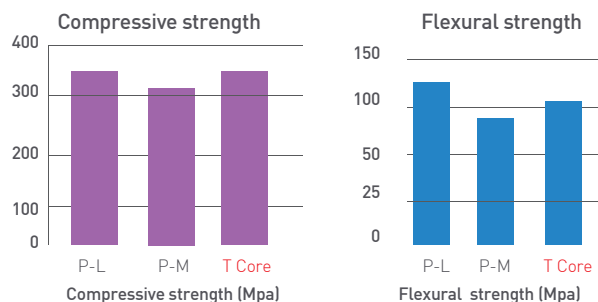
Benefits

- Extremely high durability
- Cut like dentine
- Good flow properties
- Reliable curing

Package

- **T Core kit**
(Shade : A3, White)
Dual syringes (9g X2ea)
Mixing tips(20ea)
1 Bottle @ 5g Pre-Primer
1 Bottle @ 5g Primer A
1 Bottle @ 5g Primer B
1 Syringe @ 3g Etchant
- **T Core smart mix**
(Shade : A3,Blue and White)
Dual syringes (9g X2ea)
Mixing tips(10ea)

Properties



- Dual curing core build-up
- Easy to use auto mix
- Easy to dispense



Trantemp

Esthetic Temporization Material
Bis-Acrylate-Composite



Automix



Handmix

Indications

- Crowns and Bridges
- Veneers, Inlays and Onlays
- Also indicated for long-term temporization

Benefits

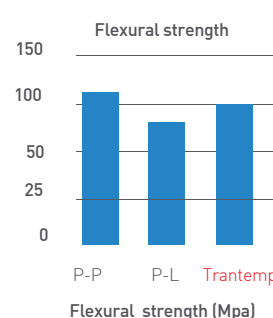
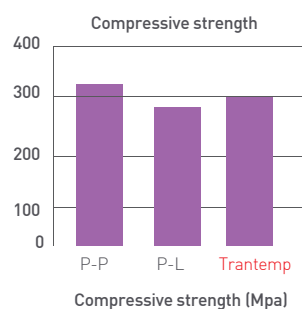
- Stronger temporary with long-term durability
- Quick intraoral set
- Highest fracture resistance
- Four natural looking shades

Package

- **Trantemp Automix**
Cartridge (65g X1ea)
(Shade : A1, A3, A3, B2)
Mixing tips (15ea)

- **Trantemp Handmix**
Base (12g X4ea) , Shade A2
Catalyst(1g X 4ea)
Mixing Pad
Mixing Spatula

Properties



Preparation



Dispensing
by automix tip



After setting
in intra-oral



Temporary setting
with temporary cement



Transeal F

Light Curing Pit and Fissure Sealant



Transeal F is a light-cured dental pit and fissure sealant designed for sealing pit and fissure of teeth for the prevention of caries. It has good characteristics of bonding strength abrasion resistance with added nano filler. It is cured to a natural white. Applied with our convenient fine syringe tip, its low viscosity formula flows easily into pits and fissures.

Indications

- Pit and Fissure Sealing

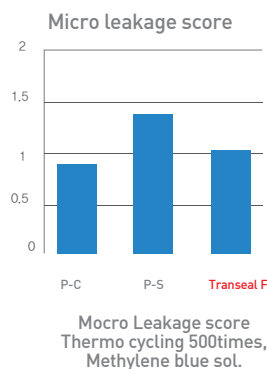
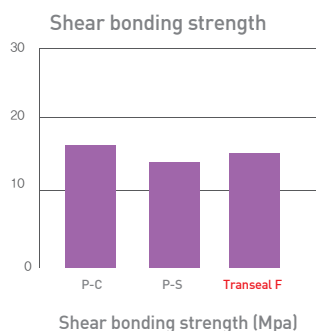
Benefits

- Easy and fast application
- Fluoride contained and releases
- Good bonding strength
- Low viscosity
- Convenient direct delivery syringe for easy application
- Low viscosity to flow easily into pits and fissures
- Contains and releases fluoride

Package

- Syringe (1.2ml X4ea)

Properties





MTA Cem

Mineral Trioxide Aggregate Endodontic Repair Material



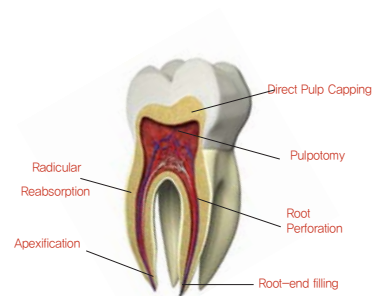
MTA Cem endodontic repair material is a powder consisting of fine, hydrophilic particles that set in the presence of water. Hydration of the powder creates a colloidal gel that solidifies to form a strong impermeable barrier that fully cures over a four-week period.

Indications

- Pulp Capping
- Root-end filling
- Root repair(resorption and perforations)
- Apexification

Benefits

- Excellent biocompatibility
- Water-based chemistry
- Calcium ions release
- Tooth coloured formula
- High radiopacity

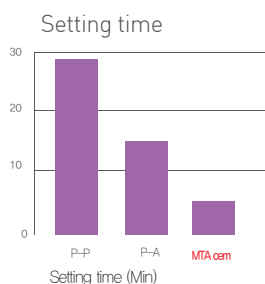


Package

- MTA Cem 1g

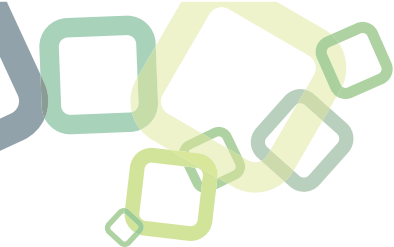
- Hydrophilic
- Calcium ions release
- Tooth-coloured formula

Properties



Physical properties

pH	11
Setting time	5 min
Compressive resistance	41 Mpa
Radiopacity	7.2 mm/Al



Transcen Etchant

37% phosphoric acid etching gel



Transcen Etchant is a 37% phosphoric acid gel. Its ideal viscosity maintains a layer thick enough to prevent prematures drying. Transcen Etchant is self-limiting in its denpth of etch(about 1.9 micrometers).

Indications

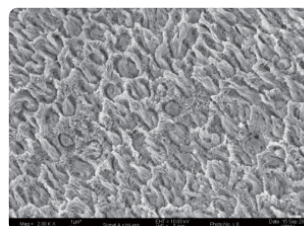
- Conditioning of surface for dentine and enamel

Benefits

- Increases bond strength
- Easy dispensing and application
- Self-limit
- Thixotropic chracteristics(not runny)
- No residue, rinse out completely

Package

- Syringe (3gX5syringe)
- Disposable tip 10ea(25gage)



Enamel Etching surface



T Bond

Universal Adhesive



T Bond is universal adhesive for Total-Etch, Self-Etch, Selective-Etch. It offers one simple adhesive application technique for both direct and indirect indications and bonds to all surfaces including enamel, dentine, glass ceramic, zirconia, noble and non-precious alloys, and composites – without additional primer.

Indications

- Bonding of composite for all classes of direct restorations
- Root surface desensitization
- Repair of composite and bonding of pit and fissure sealants
- Primer for zirconia, alumina, metal and glass ceramic indirect restorations

Benefits

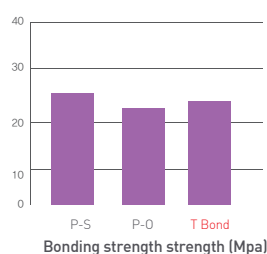
- Combined wet bonding and self adhesive
- Durable bonding strength to both moist and dry etched dentin
- High bonding strength to indirect surfaces without a primer
- MDP(10-Methacryloyloxydecyl dihydrogen phosphate) and GPDM(Glycerol phosphate dimethacrylate) based coupling monomer

Package

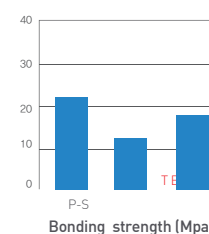
- T bond (5g X1bt.)
- Micro brush(10ea)

Properties

Bonding strength to Dentine



Bonding strength to Zirconia



- One step application for a quick 40 seconds application time
- Durable bondign for direct and indirect restorations
- Use in all techniques and on all surfaces
- MDP and GPDM monomer base



T Cem Implant

Temp
None-Eugenol Temporary Cement for Implant Luting



T Cem implant is designed specifically for implant-retained crowns and is suitable for temporary cementation of provisional restorations where long-term or increased retention is desired.

Indications

- Long-term cementation for implant-retained restorations
- Long-term cementation for long-term provisionals

Benefits

- High retention- Long-term cementation
- Low solubility
- Easy clean-up and handling
- Automix dual-barrel syringe
- Virtual no taste or odor

Package

- T Cem Implant kit
(2ea-5ml syringe each of cement, 10ea Mixing tips)

Properties

Physical properties

Properties	Data
Setting time	5 min
Compressive resistance	34 Mpa
Film thickness	17 micro

- Easy-to-use Automixing Delivery system
- High retention
- Good margin seal and no washout



T Cem NE

Temp

None Eugenol Temporary cement



None Eugenol TempCem NE not inhibit the polymerisation of resin cements and acrylic temporaries and offers an option for patients allergic to eugenol.

Indications

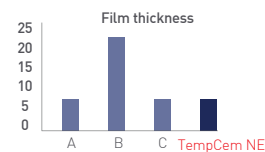
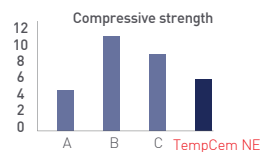
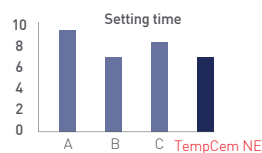
- Cementing temporary crowns and bridges
- Cementing temporary inlays, onlays and splints

Benefits

- Easy mix and loss save syringe type
- Flows and mixes easily
- High bond strength
- Easy to remove
- Setting time : less than 5min in the oral

Package

- TempCem NE 10 g* 2syringes
- Mixing pad 1 and Spatula 1



Phycal porperties

Properties	Data
Setting time	5 min
Compressive resistance	16 Mpa
Film thickness	17 micro

- None Eugenol
- Hight bond strength
- Easy to remove





T EDTA Cream

19% EDTA Cream, Chelating and Lubricant

Root Canal Cleansing and Preparation



T EDTA Cream is water soluble gel containing 19% EDTA with 10% carbamide peroxied for chemical and mechanical cleansing in root canal preparation.

Indications

- Root canal preparation with files and reamers
- Presence of calcifications in the canal
- Narrow canals in posterior teeth
- Smear layer removal

Benefits

- Removal of inorganic substances by chelation on (Ca^{2+} -EDTA)
- Easier filling with lubrication action
- Produces the cleanest canal wall after smear layer removal

Package

- T EDTA Cream 7gX2ea
- Application tips



T STAT

Paste Retraction System

15% Aluminium Chloride Topical Gigival Retraction Paste

Hemostasis and Retraction



T STAT ,an alternative to a dental retraction cord, is a viscous paste used for all procedures requiring gingival retraction including : impressions, seating of restorations, fitting rubber dams, and restoring class II, III, and V cavities

Indications

- Gingival retraction
- Stop all minor intraoral bleeding

Package

- T STAT (0.9g X2syringes.)
- Applicable tips

Benefits

- Excellent handling Non slumping
- Quick effective retraction:2 minutes
- Safe and effective
- :15% aluminium chloride paste is highly effective at controlling bleeding without staining, Discoloring surrounding tissue
- Convenient delivery system : ready to use, syringes and applicalbe tips

Application

Crown and Bridge



Before



Place



After 2mininutes, A full arch retracted view
rinse away



Before a CAD/CAM Scan

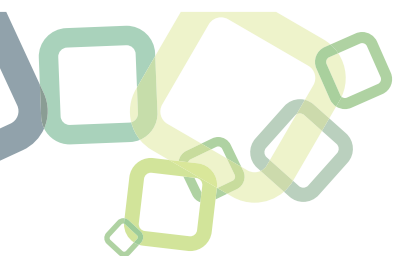


T STAT is applied
around prepared tooth



After 2 minutes,
T STAT easy rinses away

- 15% aluminium chloride
- Convenient-ready to use
- Non-slumping paste retraction system



T Block

Flowable Light-Cured Temporary and Block-out



T Block is flowable light-cured temporary and block-out resin
It is available in the ready to use syringes with 2 colors
(Blue and yellow)

Indications

- Block-out
- Temporary for the all cases

Benefits

- Easy to use : no runny
- Easy to remove in one pieces
- Elasticity
- High curing depth and fast curing
- Easy application - syringe with applicable tips

Package

- 5 Syringes @ 3g T Block
- 10 Applicable tips

Applications



block-out



Temporary

- 20 seconds light curing
- Elasticity



Soft-Dam

Light Cured Gingival Barrier



Soft-Dam is a passively adhesive methacrylate-based resin barrier used for isolating tissue adjacent to teeth being whitened. Soft-Dam is light reflecting to minimize heat and tissue sensitivity during curing. Soft-Dam Green color ensures a safe, unmistakable barrier every time.

Indications

- Gingival Barrier

Benefits

- Minimize heat and tissue sensitivity
- Protects soft tissue with impervious seal
- Directly application
- Remove easily

Package

- Syringe (1.2gX4ea)
- Applicator 10ea



Apply barrier of Sof-Dam 4-6mm wide on the gingiva. Seal interproximal spaces. Overlap resin approximately 0.5mm on to dry enamel to seal. Extend resin one tooth beyond last tooth whitened. Light cure with a scanning motion for 20 seconds. Soft-Dam desinged to easily remove from embrasures and undercuts

- Convenient direct delivery syringe for easy application.
- Designed to easily remove with rubberize
- Minimized heat during curing