



OSSTEM[®]
IMPLANT



OSSTEM[®] IMPLANT

Catalogue for Distributors

Version 4.0
Overseas Dealer Sales Dept.

Mr. Akiles Kwon(akiles_kwon@osstem.com), Mr. Luke Yoon (Luke@osstem.com), Mr. Andres Jimenez Villa (ajv@osstem.com)

A large, modern, curved building with multiple floors and glass windows, featuring the OSSTEM IMPLANT logo on the top left corner.

CONTENTS

- 01 **DENTAL IMPLANT**
- 02 **OSSTEM KIT**
- 03 **UNIT CHAIR**
- 04 **EQUIPMENT**
- 05 **GBR**
- 06 **IMPRESSION**
- 07 **ORAL CARE**

DENTAL IMPLANT

01



IMPLANT SYSTEM

BEST



TS system (T Transcendent S Solution)

Submerged Type with an Internal Hex 11° tapered connection structure

- The most generally used Implant
- Less bone loss by 11° Morse taper design
- Corkscrew thread & Cutting edge
 - Superior self-threading & Inserting function
 - Enhanced initial stability in soft bone
- Line-up : 3 types of body shape
 - TSII : Straight body with outstanding insertion depth control
 - TSIII : 1.5° tapered body good for immediate & early loading
 - TSIV : 6° tapered body good for maxillary sinus and soft bone case
- Applicable surface : SA / CA / BA / SOI



SS system (S Success S Solution)

Non-submerged Type with an Internal Octa 8° tapered connection structure

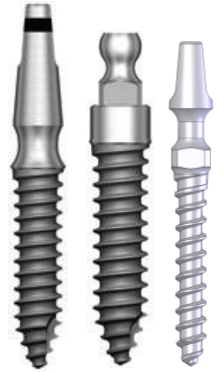
- Especially good for posterior teeth by 8° Morse taper Octa connection
 - Less gap or movement between Implants and Abutments with firm connection
- Corkscrew thread & Cutting edge
 - Superior self-threading effect
 - Enhanced initial stability
- Line-up : 2 types of body shape
 - SSII : Straight body with outstanding insertion depth control
 - SSIII : 1.5° tapered body good for immediate & early loading
- Applicable surface : SA / CA / BA



US system (U niversal S Solution)

Submerged Type with an External Hex connection structure

- No sink down effect (Butt Joint)
- Wide Path compensation (Max 30°)
- Corkscrew thread & Cutting edge
 - Superior self-threading effect
 - Enhanced initial stability
- Line-up : 3 types of body shape
 - USII : Straight body with outstanding insertion depth control
 - USIII : 1.5° tapered body good for immediate & early loading
 - USIV : 6° tapered body good for maxillary sinus and soft bone case
- Applicable surface : SA / CA



MS system (M icro S Solution)

One-body Implant suitable for narrow alveolar bone on Anterior Mandible

- Narrow Ridge
 - Suitable for narrow ridge such as anterior mandible
 - SA surface
- Denture
 - Suitable for denture fabrication in narrow bone width and edentulous patients
 - SA surface
- Provisional
 - Temporary implant used for Provisional, immediate prosthesis
 - Machined surface for easy removal

IMPLANT SURFACE



(Sand blasted with alumina and Acid etched Surface)

SA Surface

BEST

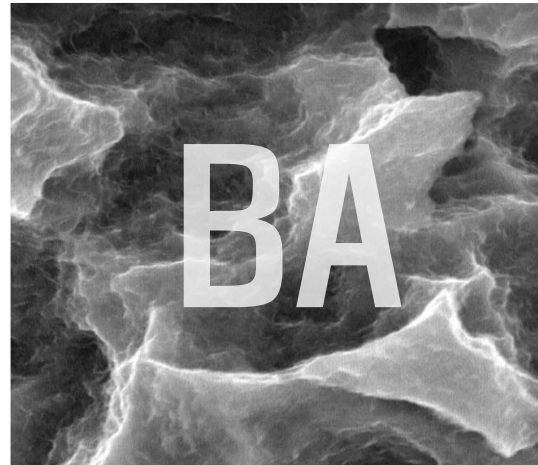
- The most generally used surface
- Uniform surface micro-pits of 1-3
- Surface roughness : Ra 2.5~3.0 μm
- Surface area increased by 46% compared to RBM
- Osteoblast differentiation & Ossification improved by 20% compared to RBM
- Initial stability improved by 48% compared to RBM
- Early loading after 8 weeks of placement
- Available system : TS, SS, US

CA Surface

- Super-hydrophilic SA surface
 - Store SA in Calcium ion solution to obtain Hydrophilic property
- Initial cellular differentiation improved by 19% compared to SA Surface
- Ossification improved by 26% compared to SA Surface with good blood wettability
- Initial stability improved by 34% compared to SA Surface
- Early loading after 4~6 weeks of placement
- Available system : TS, SS, US



(Calcium SA)



(Bioabsorbable Apatite Nano-Coating)

BA Surface

- 10nm ultra-thin hydroxyapatite coated SA surface
 - Bio-absorbable apatite nano-coated on SA surface to obtain Hydrophilic property
- Applicable to all types of bone quality with high-quality bone formation even in case of poor bone
- Ossification improved by 40% compared to SA surface
- Early loading after 4~6 weeks of placement
- Available system : TS, SS

SOI Surface

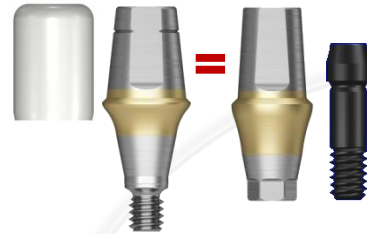
- Ultra hydrophilic SA surface
 - Coated with substance "HEPES" on SA surface to obtain Hydrophilic property
 - Activation of blood clot formation and prevention of carbon adsorption in the air
- Protein and Cellular adhesion increased 130 times compared to SA surface
- Initial stability improved by 57% compared to SA surface
- Early loading after 4 weeks of placement
- Available system : TS



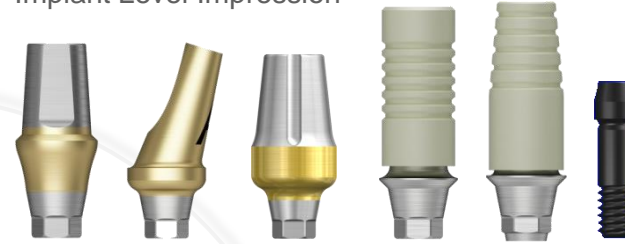
(Super Osseointegration)

ABUTMENT FOR TS SYSTEM

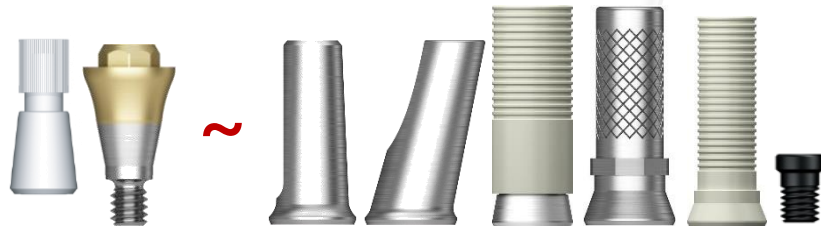
Rigid / Transfer
Abutment Level Impression



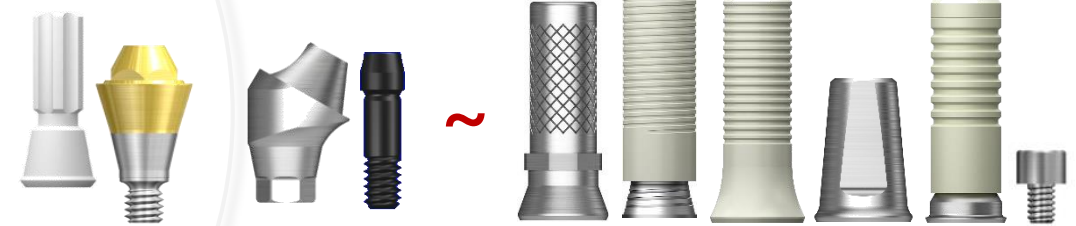
Transfer / Angled / FreeForm ST / GoldCast / NP-Cast
Implant Level Impression



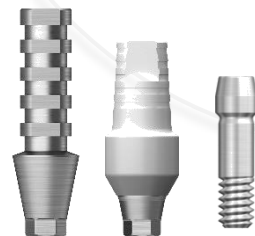
Convertible / ~Cylinder
Abutment Level Impression



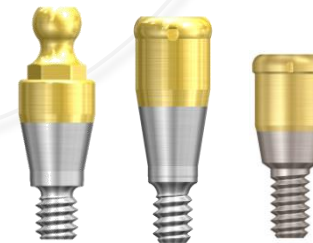
Multi / Multi Angled / ~Cylinder
Abutment Level Impression



Temporary / Quick Temporary
Implant Level Impression



Stud / Port / Locator
Overdenture



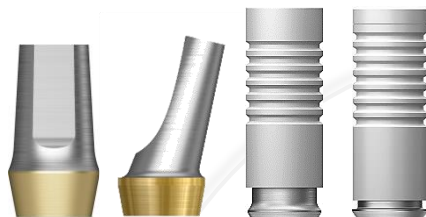
ABUTMENT FOR SS SYSTEM



ABUTMENT FOR US SYSTEM

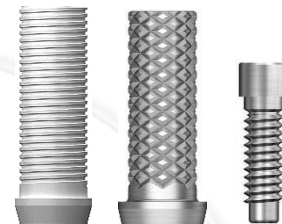
Cement / Angled / Gold-Cast / NP-Cast

Implant Level Impression



Plastic / Temporary

Implant Level Impression



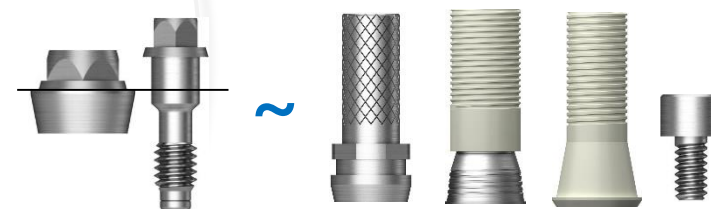
Multi-Angled / ~Cylinder

Abutment Level Impression



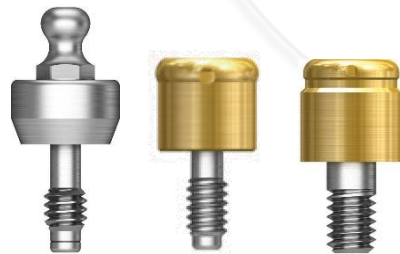
Esthetic / ~Cylinder

Abutment Level Impression



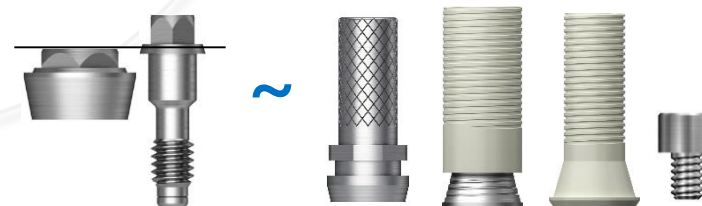
O-ring / Port / Locator[®]

Overdenture



Esthetic-low / ~Cylinder

Abutment Level Impression



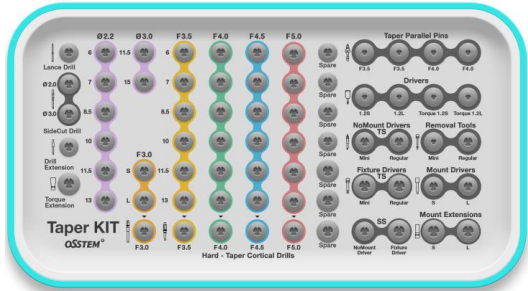
OSSTEM KIT

02



Taper KIT

BEST



Cortical drill Ø3.0 drill

- ITEM CODE : OTSK
- Available System : TS III/IV, SS III, US III/IV

▪ Surgical KIT optimized for tapered Implants

▪ Simple drilling procedure

- Soft Bone : Done in 2~3 steps
- Normal & Hard Bone : Done in 3~5 steps

▪ Preventing Bone Heating during drilling

- Drilling temp. Max 40.3 °C

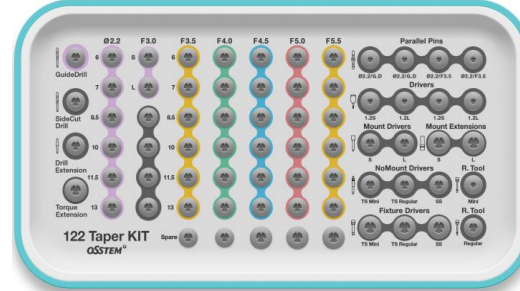
▪ Built-in stoppers for drilling depth control

- Stopper drill consists of diverse lengths (Non-stopper drill also included)

▪ Excellent Drilling Power & Preventing Drill Bouncing

- Multiple shaped taper drill design and excellent manufacturing technology provides smooth and fast drilling result and prevents drill bouncing

122 Taper KIT



Ø5.5 drill

- ITEM CODE : O122TPK
- Available System : TS III/IV, SS III, US III/IV

▪ Upgraded from Taper KIT

▪ Difference between 122 Taper and Taper KIT

- Remove - Cortical drill / Ø3.0 drill
- Add - Ø5.5 Taper drill(5 types), Ø2.7 drill(2 types)
- Modify - Ø3.5~Ø5.0 Taper drill (20 types)

▪ Reducing chair time with 2 steps procedure

- Soft Bone : Done in 1 step
- Normal & Hard Bone : Done in 2 steps

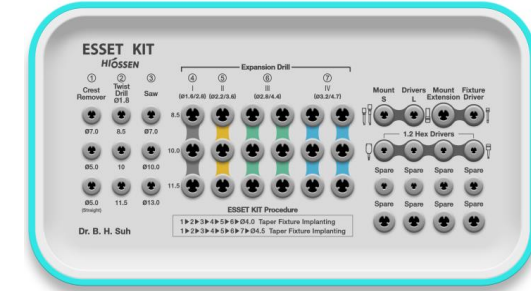
▪ Preventing Bone Heating during drilling

- Drilling temp. MAX 39.2 °C

▪ Built-in stoppers for drilling depth control

▪ Excellent Drilling Power & Preventing Drill Bouncing

ESSET KIT



Crest Remover Expansion drill

- ITEM CODE : HESEK
- Available System : TS II/III, SS II/III, US II/III

▪ Narrow ridge KIT for easy split and safe expansion

▪ Simple, Predictable & Safe Surgery by using the following tools

- Expansion Tap Tool : Minimal GBR
- Saw Blade : No Malleting & No Buccal Fracture
- Crest Remover : Simple Ridge Modification

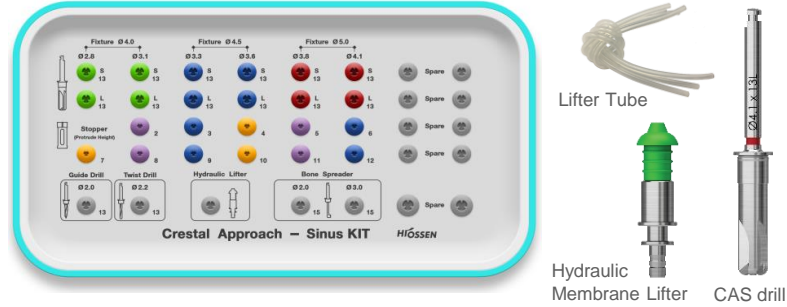
▪ Increased patient comfort compared to malleting and chiseling

▪ Reduced Recovery Time

- Split and Expanded bone provides a sufficient supply of bone forming cells for quicker integration compared to bone grafting.

CAS KIT

(Crestal Approach-Sinus KIT)



- ITEM CODE : HCRSNK
- Available System : TS II/III, SS II/III, US II/III

▪ Sinus KIT for a Crestal Approach Surgery

▪ Easy & Safe Membrane Elevation

- Hydraulic pressure lifts the membrane widely and high
- A round-shaped CAS drill prevents membrane perforation and Its drill design forms a conical bone lid and bone chip while drilling
- A drill stopper prevents over drilling

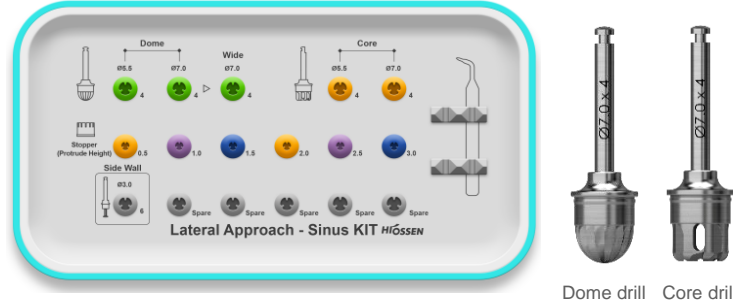
▪ No more pain without Malleting

▪ Applicable in various cases (Flat, Inclined, Septum)

▪ Drilling safely even nearby the Inferior Alveolar Nerve in Mandible

LAS KIT

(Lateral Approach-Sinus KIT)



- ITEM CODE : HLRSNK

▪ Sinus KIT for a Lateral Approach Surgery

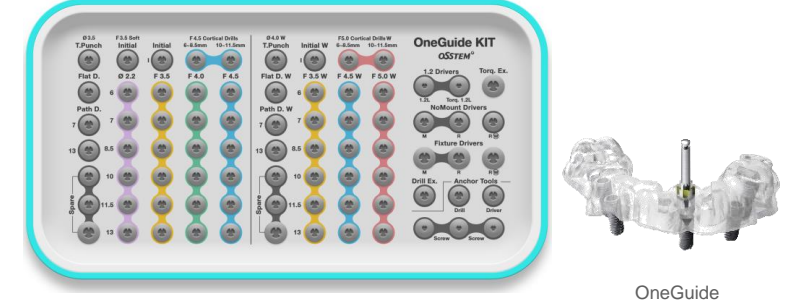
▪ Required Lateral approach surgery after failing a Crestal approach surgery due to membrane perforation

▪ Easy & Safe of Membrane Elevation

- Dome & Core drills create a lateral window easily without using high speed bur and form bone particles while drilling
- A drill stopper prevents over drilling

▪ Easy to form a lateral window at a time with excellent cutting force of Dome & Core drills

OneGuide KIT



- ITEM CODE : OOGK
- Available System : TSIII/IV, SSIII, USIII

▪ Surgical KIT for a Digital Guided Surgery using customized templates

- Using CT data and oral scan data, a customized surgical guide is fabricated through a computer

▪ Fast drilling without heating

- Its drill design provides excellent cutting force

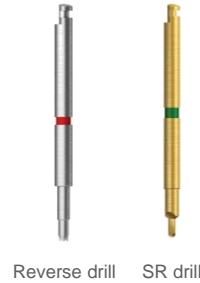
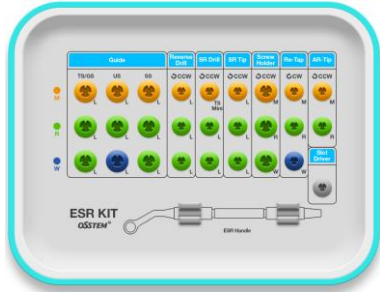
▪ Precise & Quick & simple surgery

- Flapless method is good for difficult cases such as edentulous jaw, maxillary sinus, anterior region and mandible posterior region compare to open-flap method
- Side open technique allows implant placement even in the posterior region like teeth No.7

ESR KIT

(Easy Screw Removal KIT)

CE



- ITEM CODE : OESRK
- Available System : TS II/III/IV, SS II/III, US II/III/IV

▪ Screw Removal KIT for easy and fast Removal

▪ Application Cases

- Screw Loosening
- Screw Fracture
- Abutment Fracture
- Damage of Implant internal thread
- Screw Hex Slip (Stripped hex hole)

▪ High success rate of Screw removal

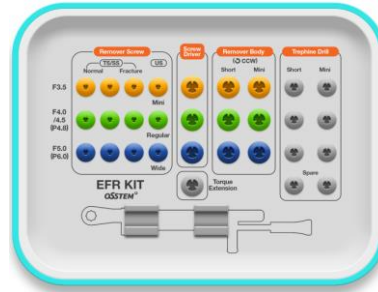
▪ Excellent durability and cutting force of screw removal drill

▪ Good visibility and High convenience

EIR KIT

(Easy Implant Removal KIT)

CE



- ITEM CODE : OSFRK
- Available System : TS II/III, SS II/III, US II/III/Ultra-wide

▪ Implant Removal KIT for easy and fast Removal

▪ Application Cases

- Wrong path
- Bone resorption
- Fracture
- Inward Damage

▪ Implant Removal without bone loss

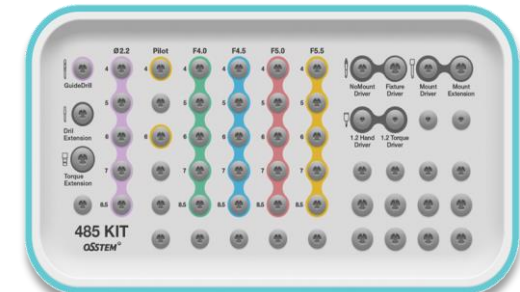
- Rotate Counterclockwise of screw threads leading to minimal bone loss compared to Trephine drill
- Immediate re-placement of Implant with the same diameter after Implant removal

▪ Quick and simple removal by two steps

- Done in 2 steps by fastening the remover screw and the remover body of KIT

485 KIT

CE



- ITEM CODE : O485K
- Available System : TS III, SS III, US III

▪ Surgical KIT for safe placement of short Implants in the Mandible

- Especially for 4mm~8.5mm Implants

▪ The round shape of the drill prevents damages to the mandibular nerve

▪ Safe drilling is possible despite insufficient bone height due to Stoppers

▪ Reduce chair time with simple sequence

- Normal bone and hard bone : Done in 2 steps

UNIT CHAIR

03



K3 DENTAL UNIT CHAIR

CE Registration

OSSTEM[®]
IMPLANT

- ✓ Globally installed more than **40,000 units** since 2013

Introducing our most advanced healing unit chair, ergonomically designed to allow streamlined interactions among dentists, dental assistants, and patients. Designed by well-known dentists and biomedical engineers, the K3 unit chair provides a comfortable patient experience and efficient work environments for doctors. The flexible integration of the delivery system offers easy access to enhance patient treatments and care.



* Available up to 135kg (298lb)

K3 DENTAL UNIT CHAIR

CE Registration

OSSTEM[®]
IMPLANT



Brown



Dark Blue



Dark Violet



Blue



Gold



Orange



Red



Light Green



Ivory

K3 DENTAL UNIT CHAIR

CE Registration

Seat Type



Single Cushion Seat Double Cushion Seat

Stool Type



Dr. Stool Assist Stool

Table Type



Mount type Cart type

Arm Rest



Easy Opening & Closing

Optimal Position for Treatment



Foot Controller



All-in-one Console



Paper cup holder, Tissue holder, Side Table

Water Supply Sys-dual Sensor

Timer & Automatic sensor



Mouse Pad & Expandable Table



LED Light



General Treatment
(Surgical LED light)



Resin Treatment
(Blue light cut-off function)

USB Port



Power Socket



K3 DENTAL UNIT CHAIR

High Speed Handpiece with Air Motor (N.S.K)


	Standard Head	Mini Head	Coupling
			
	H311L	H511L	CL
Power	26W	23W	-
Water Spray	Quattro	Quattro	-
Optic	Lux	Lux	Lux
Head Size	D12.1 x H13.3mm	D10.6 x H12.4mm	-

Low Speed Handpiece with Air Motor (N.S.K)



AE SET

	Air Motor	Contra Angle	Straight
			
	AE	A200E	A400E
Gear Ratio	-	1:1 Direct Drive	1:1 Direct Drive
Water Spray	External	External	External
Optic	Non Lux	Lux	Non Lux

High & Low Speed Handpiece with Electric Motor (Bien-Air, N.S.K)

	Elec. Motor	Contra Angle	Contra Angle	Straight HP
				
	EIL (Bien-Air)	E250IL (N.S.K)	E200IL (N.S.K)	E400I (N.S.K)
Speed	-	High speed	Low speed	Low speed
Gear Ratio	-	1:5 Increasing	1:1 Direct Drive	1:1 Direct Drive
Water Spray	-	Quattro	Single	Single
Optic	LED	Lux	Lux	Non Lux

Scaler (EMS)

	Optic	Non-optic
		
	S5L (EMS)	S5T (EMS)
Tip	A-type /1EA	A, P, PS-type / 1EA each
Tip	Power	Scaling Application
A	Strong	Supragingival / Heavy calculus
P	Moderate	PPD*<3mm / Moderate-light calculus
PS	Soft	PPD<10mm / Light calculus

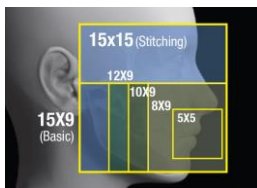
EQUIPMENT

04

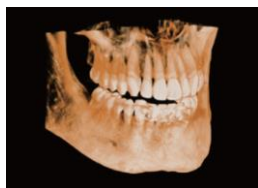


Digital X-ray Imaging Equipment

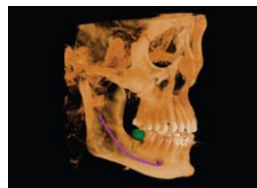
- **3 in 1 CBCT (CT, Panorama, Cephalo)**
- **Multiple FOV (Field of View) allows for a wide range of applications**
 - FOV 5x5, 8x9, 10x9, 12x9, 15x9(Standard), 15x15(Stitching)
 - Possible to check Sinus & Maxillary Antrum & Mandibular at once



Multi FOV



FOV12x9



FOV15x15

- **High Resolution with a voxel size of 0.08mm (80 microns)**
- **User-friendly System & High ease of Use**
 - Easy Interface and Touch panel
 - Voice Support
 - Mood light displaying status (LED color guide)
 - Patient Alignment Laser

Specification	CT	Panorama	Cephalo
Sensor	Flat Panel	Flat Panel	CdTe CMOS
Scan Time	ND 14.4 sec. HD 21.7 sec.	ND 10.1 sec. HD 16.1 sec.	ND 4.6 sec. HD 9.3 sec.
Voxel Size	0.08~0.2mm	-	-
Recon Time	40 sec. (Based on 15x9 / 0.2mm Voxel)		



Implant Surgery Motor

Enables dentists to operate in good environment.

- **Powerful Torque (80Ncm) & Stable Deceleration Ratio of 20:1**
- **LED LUX (Approx. 32,000 LUX)**
-LED light is similar to natural light and Brightness is adjustable by 3steps
- **Large LCD Display & Various Information Indicators**
- **Advanced Torque Calibration System**
-Calibration function provides low deviation torque value and makes safe operation



Optic Ratio of 20:1
(S200EL, N.S.K)

Technical Specification	
Item Code	SM3EN2D
Dimension	265(W)x220(L)x100(H)mm
Rotation Speed	200~40,000 rpm
Torque for Motor	Max. 80Ncm
Motor Cable Length	2m
Manufacturer	N.S.K

Intraoral Camera (wired)

Shows patient's oral health realistically and helps patients to understand their oral health status

- **Auto-focus & Anti-shaking**
- **2-way Shooting Buttons**
- **Slim Head Design**
-Excellent Accessibility to wisdom teeth
- **160° Contra Angle**
-Comfortable grip with an angled-handpiece



Technical Specification

Item Code	SNAP004
Image Sensor	CMOS (OV9712 or AR0330)
Resolution	1.3M Full HD (1280x720)
Lens Type	Liquid lens module
Light Source	White LED
Focus Range	5mm ~ 5cm
Angle of View	70 degrees
Interface & Operating	USB 2.0 / DC 5V

N1 Registration

Portable X-ray

Generates X-rays to get intra-oral diagnostic imaging

- **Clear X-ray Image (70kV, 3mA)**
- **Light Weight (1.5Kg) & Gun Type Design**
-No strain or fatigue on clinician's wrist
- **Intuitive screen and easy to use**
-Intuitive LCD screen displaying
-Press buttons to prevent device malfunction
- **Long Life Battery to take 300 images**



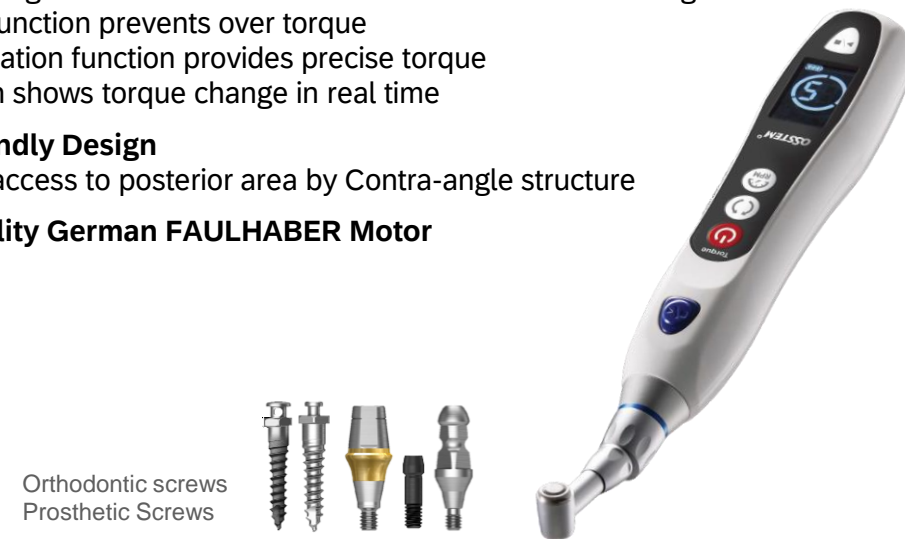
Technical Specification	
Item Code	N1
Image	70kV, 3mA / Focal spot size 0.3mm
Weight	1.5 kg
Battery	LI-Polymer (Long Life Battery)
No. of shot	250~300 times after full charged
Manufacturer	Osstem Implant Co., Ltd.

e-Driver Registration

Wireless Electric Driver

All in one from Placement to Removal / Detach of screws

- **Strong & Precise Torque Value**
-Torque setting function minimizes screw fracture/screw loosening
-Auto stop function prevents over torque
-Auto Calibration function provides precise torque
-LCD screen shows torque change in real time
- **User-Friendly Design**
-Very easy access to posterior area by Contra-angle structure
- **High Quality German FAULHABER Motor**



Technical Specification	
Item Code	OSM-TORQ
Drilling Speed Range	15rpm~60rpm (Control by 15rpm Unit)
Torque Range	5Ncm~35Ncm (Control by 5Ncm Unit)
Manufacturer	Osstem Implant Co., Ltd.

Dr's Light AT

Curing Light

- High Power (1600mW/cm2)
- Wireless & Interchangeable battery
- 4 curing mode (Selectable curing time & Power)
- Focused Light
- 330° Head twist



With Focus Lens



Interchangeable Battery



Technical Specification

Item Code	Dr's Light AT
Dimension	232x26x26mm (130g)
Wave Length	440~490nm
Power Source	Lithium-ion Battery (Interchangeable)
Light Source	High Power LED
Manufacturer	Good Doctors Co., Ltd.

Vutees Light

Tooth-Whitening for Clinic

- Light source : Power Blue LED (Visible Light)
- Bleaching Effect 30% up
- Unlimited Number of Operation



Technical Specification

Item Code	BWL001
Dimension	591x605x1558mm (12KG)
LED Control	5~30min. (5min. Unit)
Energy Density	220mW/cm2
Wave Length	420~520nm (Power Blue LED)
Use Count	Unlimited
Manufacturer	Osstem Implant Co., Ltd.

Vutees Light S

Tooth-Whitening for Clinic

- A High-Quality Mini Photodetector for Experts
- Usable while charging



Technical Specification	
Item Code	BWL003
Operating Time	20min.
Energy Density	53mW/cm2
Components	Photodetector, 2 mouthpieces
Logo Color	Gold
Manufacturer	Osstem Implant Co., Ltd.

Vutees White Light

Tooth-Whitening for Home Use

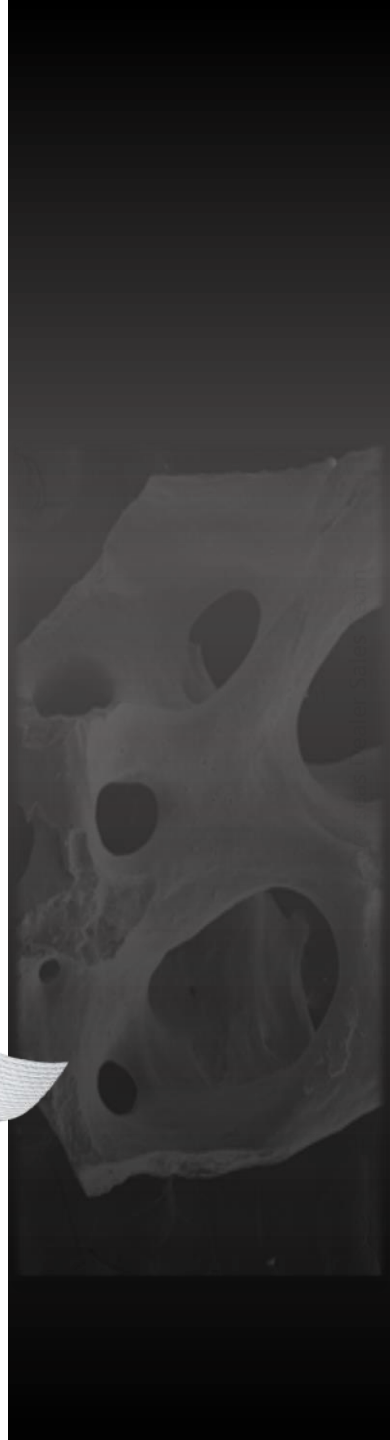
- A High-Quality Mini Photodetector for Customers
- Usable after charging
- Wearable Necklace-type that can be used anywhere at any time



Technical Specification	
Item Code	BWL002
Operating Time	5min.
Components	Photodetector, 2 mouthpieces
Logo Color	Silver
Manufacturer	Osstem Implant Co., Ltd.

GBR

05



A-Oss

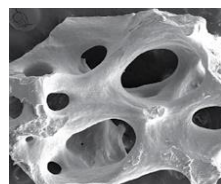
CE Registration

Xenograft Bone

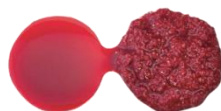
The Most Human Bone-like Xenograft Bone Material



- **Pore & Surface Structures that Facilitate Osteogenesis**
-Easy to carry body fluids, blood vessels and cells for new bone generation.
- **Superior Blood Wettability**
-Osteoblasts in blood form large quantity of bone
- **Outstanding Volume Maintenance**
-Stable maintenance of blood during osteogenesis period



Pore Structure(x50)



Blood Permeability

Information	
Raw Material	Bovine Bone (Australia)
Particle Size	0.25~1.0mm (0.2 / 0.5 / 1.0 / 2.0 / 4.0 CC)
	1.0~2.0mm (0.3 / 0.75 / 1.5 / 3.0 / 6.0 CC)
Manufacturer	Osstem Implant Co., Ltd.

Q-Oss+

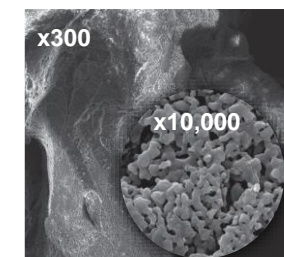
CE Registration

Synthetic Bone

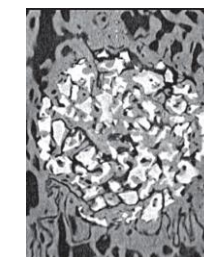
Synthetic Bone Graft with Excellent Osteogenesis and Bone Replacement



- **Optimal Composition for Osteogenesis**
- **Excellent resistance against oral bacteria**
- **Exceptional Pore Structure & Blood wettability**
-Its high surface area absorbs copious amounts of blood, which enhance new bone formation by 40~44% compared to competitor products



Pore Structure (x300, x10k)



Volume Maintenance

Information	
Raw Material	20% HA, 80% β -TCP
Particle Size	0.5~1.0mm (0.2 / 0.4 / 0.8 / 1.5 / 3.0 CC)
	1.0~2.0mm (0.2 / 0.5 / 1.0 / 2.0 / 4.0 CC)
Manufacturer	Osstem Implant Co., Ltd.

Allograft Cortical Bone

A freeze-dried bone allograft composed of 100% cortical bone which maintains all the growth factors, proteins, and minerals that are related to promoting new bone formation



- **Excellent Structural Maintenance with 100% Cortical Bone**
-Cortical bone is much denser and harder compared to cancellous bone
- **Curved-Syringe type for Convenience**
- **Excellent Biocompatibility**



Cortical Bone



Information

Raw Material	100% Allograft Cortical Bone
Type	FDBA (Freeze-Dried Bone Allograft)
Particle Size (Powder)	200~850 μ m (0.25 / 0.5 / 1.0 CC)
Particle Size (Chip)	850~1,000 μ m (0.25 / 0.5 / 1.0 CC)
Manufacturer	Hans Biomed Corp.

Allograft Cortical Bone

A demineralized freeze-dried bone allograft composed of 100% cortical bone which has the ability of osteoinduction through demineralization process



- **Optimal Composition for Osteogenesis**
- **Exceptional Pore Structure & Blood wettability**
-Its high surface area absorbs copious amounts of blood, which enhance new bone formation by 40~44% compared to competitor products



Demineralized Cortical Bone



Information

Raw Material	100% Demineralized Allograft Cortical Bone
Type	DFDBA (Demineralized Freeze-Dried Bone Allograft)
Particle Size (Powder)	200~850 μ m (0.25 / 0.5 / 1.0 CC)
Particle Size (Chip)	850~1,500 μ m (0.25 / 0.5 / 1.0 CC)
Manufacturer	Hans Biomed Corp.

Absorbable Membrane

A sterile, acellular dermal matrix (ADM) derived from human skin tissue

- Membrane and Gingiva Reconstruction
- Freeze-dried, Rehydration required
- Excellent Biocompatibility

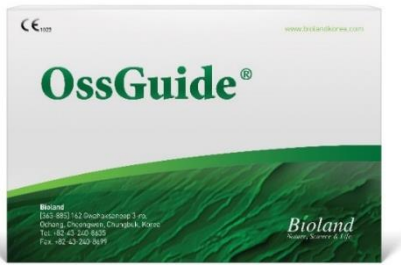


Information

Material	Human Dermis (Homologous acellular dermal matrix)
Thickness	0.25~0.59 / 0.60~0.99 / 1.00~1.39mm
Size	10x20 / 10x40 / 20x20 / 20x40
Manufacturer	Hans Biomed Corp.

Absorbable Membrane

Easy to Use and Obtain Stable Results



- High tensile strength and adhesion improve convenience of use
 - High tensile strength prevents tearing of membrane
 - Both sides are identical and may be used before and after hydration
- Supports New Bone Formation and Soft-Tissue Healing with Multi-pore structure
- Maintains its barrier functions to accelerate bone formation

Information

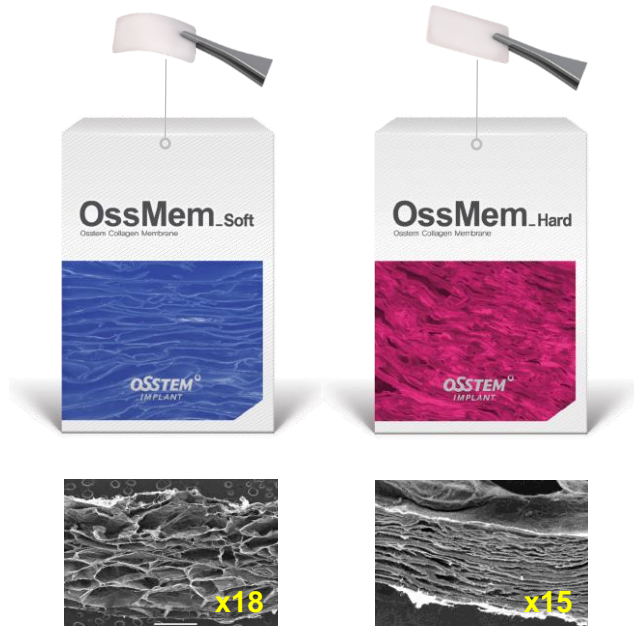
Material	Porcine Collagen
Thickness	0.2mm
Size	15x20 / 20x30 / 30x40
Manufacturer	Hyundai Bioland

OssMem

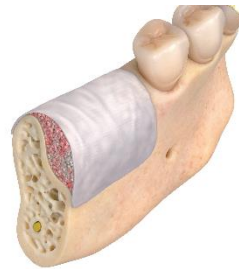
CE Registration

Absorbable Membrane

A absorbable membrane with excellent barrier function for new bone formation



- Excellent Adhesion and handling ability on bone defect
- Excellent soft tissue blocking ability thanks to dense collagen layer
- Sufficient blocking ability, since it stays in the body for 3-4 months thanks to cross linking technique



Information	OssMem Soft	OssMem Hard
Material	Bovine Collagen (New Zealand)	
Hydration Time	30 Sec.	120 Sec.
Resorption Period	About 20 weeks	
Size & Thickness	15x20 / 20x30 / 30x40 & 0.35mm	
Manufacturer	Osstem Implant Co., Ltd.	

OssBuilder

CE & FDA Registration

OSSTEM[®]
IMPLANT

Non-Absorbable Membrane

A titanium membrane used to regenerate periodontal tissue promotes bone formation in areas where natural bone defect has occurred



- **Customized for all degrees of bone defect**
-Categorized as 1 wall / 2 wall / 3 wall augmentation according to the degree and form of bone defect
- **Pre-formed 3D design with no additional trimming or bending**
-Minimizing gingival incision as unnecessary to fix screw thanks to the 3D shape
- **Mesh Type Membrane with No Risk of Exposure**
-Anchored to the implant by screws to secure bone graft material and builder firmly in place



1 Wall



2 Wall



3 Wall



With Cover cap



With Healing cap

Information	
Material	Titanium
Design	3D pre-formed Design with no bending required
Builder Type	Papilla / Lateral / Jaw Builder
Manufacturer	Osstem Implant Co., Ltd.

IMPRESSION

06



Hysil Plus

- Hydrophilic VPS impression material for precise impression taking
- Easily removable with high tensile strength
- Allows sufficient working time and short intraoral setting time
- Able to take impressions for all types of margins



Light Body



Mono Body



Heavy Body

Item	Specifications	Working Time	Intraoral Setting Time
Light	50ml Cart x 4 50ml Cart x 15	3 min. 50 sec.	2 min. 30 sec.
Mono	50ml Cart x 4 50ml Cart x 15	3 min. 50 sec.	2 min. 30 sec.
Heavy	50ml Cart x 4 50ml Cart x 15	3 min. 50 sec.	2 min. 30 sec.

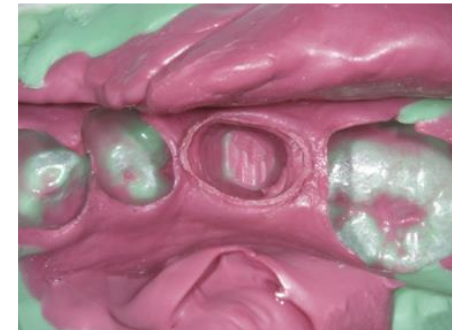
* Types of Margins



Inlay



Transfer (Implant Level)



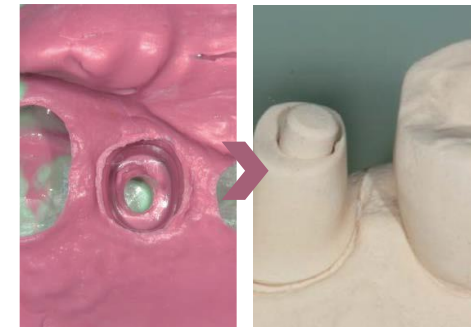
Crown and Bridge



Plastic Coping Pick up (Abt. Level)



Denture



Abutment Direct Impression

ORAL CARE

07



Customize the whitening treatment according to the condition of your teeth!

Vussen

Bright	Slightly Dark	Dark	Very Dark
 <p>Brightening</p>  <p>HAP 5%</p>	 <p>1st STAGE Gentle Whitening</p>  <p>H₂O₂ 0.75%</p>	 <p>2nd STAGE General Whitening</p>  <p>H₂O₂ 1.5%</p>	 <p>3rd STAGE Strong Whitening</p>  <p>H₂O₂ 2.8%</p>
<p>Vussen H</p> <ul style="list-style-type: none"> • Contains tooth components • Recommended for all including those with sensitive teeth. • Prevents re-staining 	<p>Vussen 7</p> <ul style="list-style-type: none"> • Professional whitening ingredients • Prevents re-staining 	<p>Vussen 15</p> <ul style="list-style-type: none"> • 2 times stronger whitening with professional ingredients • Prevents re-staining 	<p>Vussen 28</p> <ul style="list-style-type: none"> • 3.5 times stronger whitening with professional ingredients • Prevents re-staining

* We recommend 'Vussen H' for users with weak gum, children and pregnant women.

Whitening Toothpaste



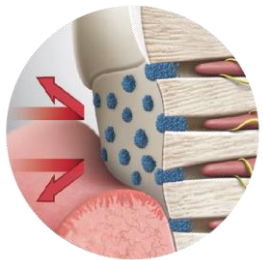
Toothpaste

Sensitive Teeth



Vussen S

Effectively blocks external irritation by closing the exposed area of dentin.

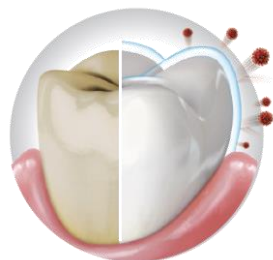


Cavity Care



Vussen C

Excellent decay prevention of teeth and 99.9% removal of the bacteria that can cause cavities.



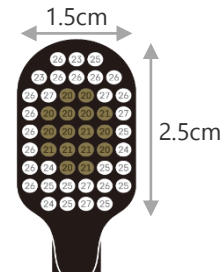
Toothbrush

Double-wide

With Six rows of wide heads, You can perfectly clean and massage your gums at once.



- Soft Bristles
- Hard Bristles



Gargle

* No alcohol for sensitive oral cavity.



Cool Zero Gargle



Cool Gargle

Travel KIT

