

# 2021 Digital Dentistry Roadmap



Overseas Dealer Sales Team

## 1. Digital Dentistry

## 2. Digital Dentistry Reasons to Go

## 3. Digital Dentistry Workflow

- ## 4. Digital Dentistry with
- (1) OneGuide : Osstem Guided Surgery System
  - (2) Digital Prosthetics
  - (3) Digital Custom Abutments

## ■ What is Digital Dentistry?

- ✓ Dental treatment using computer software and digital devices.
- ✓ Starting from digital data input such as CT, Oral scan, and CAD/CAM\*.  
(CAD/CAM\*-Computer Aided Design, Computer Aided Manufacturing)
- ✓ Finishing with precise output from a milling machine and 3D printer.



## 2. DIGITAL DENTISTRY REASONS TO GO

### ■ Why Should I Go Digital?

#### ✓ Advantages

##### Be expert!

Beginners can bring out fine results as experts

##### Accurate & Speedy

Enhance quality while saving time and the costs.

##### Efficient

Access work data anytime, anywhere.

##### Digital Data

Track and analyze performance better

#### Drawbacks

##### Price

Digital devices and S/W required

##### Entry Barrier

Knowledge for S/W required

##### Case Coverage

Not applicable to all cases yet



# 3. DIGITAL DENTISTRY WORKFLOW

ANALOG



1. Panorama



2. Plan



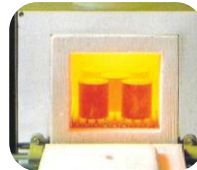
3. Surgery



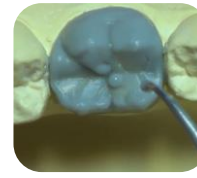
4. Impression



5. Model



8. Burn-out



6. Wax up



9. Casting



7. Investment



10. Build up



11. Abt & Crown

First Visit

2nd Visit

3rd Visit

Lab-Side (1 week)

4th Visit

First Visit

Lab-Side

2nd Visit

DIGITAL



1. CBCT



2. Scan



3. Planning



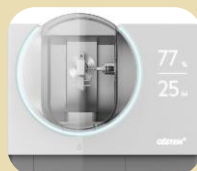
4. Guided Surgery



5. Temp Abt & Crown



6. Design

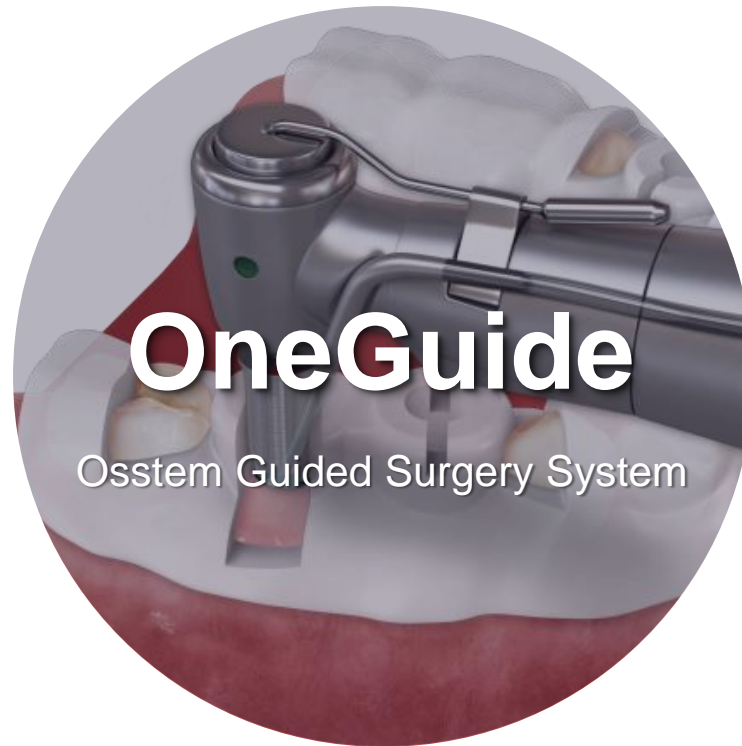


7. Fabrication



8. Abt & Crown

✓ All done!  
Implant treatment  
in 5 days!



## ■ Guided Implant Surgery (6 Steps)

### INPUT : Digital Data Acquisition

### DESIGN

#### 1.CT

- Acquire CBCT data from a patient to check their bone density, nerves, and path for implant placement.

✓ Requirements: CBCT

✓ **Osstem T1 Available**  
Osstem T2 (Available in 2022)



#### 2.Scan

- Scan the patient's mouth for digital data with either an intraoral scanner or a model scanner.

✓ Requirements: Intraoral/Model Scanner

✓ Intraoral scanner (3Shape Trios, ...)  
Model scanner (3Shape E-series, ...)



#### 3.Plan

- Integrate CT data and scan data so that the most suitable and secure fixture can be chosen based on digital virtual surgery.

✓ Requirements: Planning software  
✓ Planning software (Implant Studio, ...)

**Osstem OneGuide software**  
(Available in 2022)\*

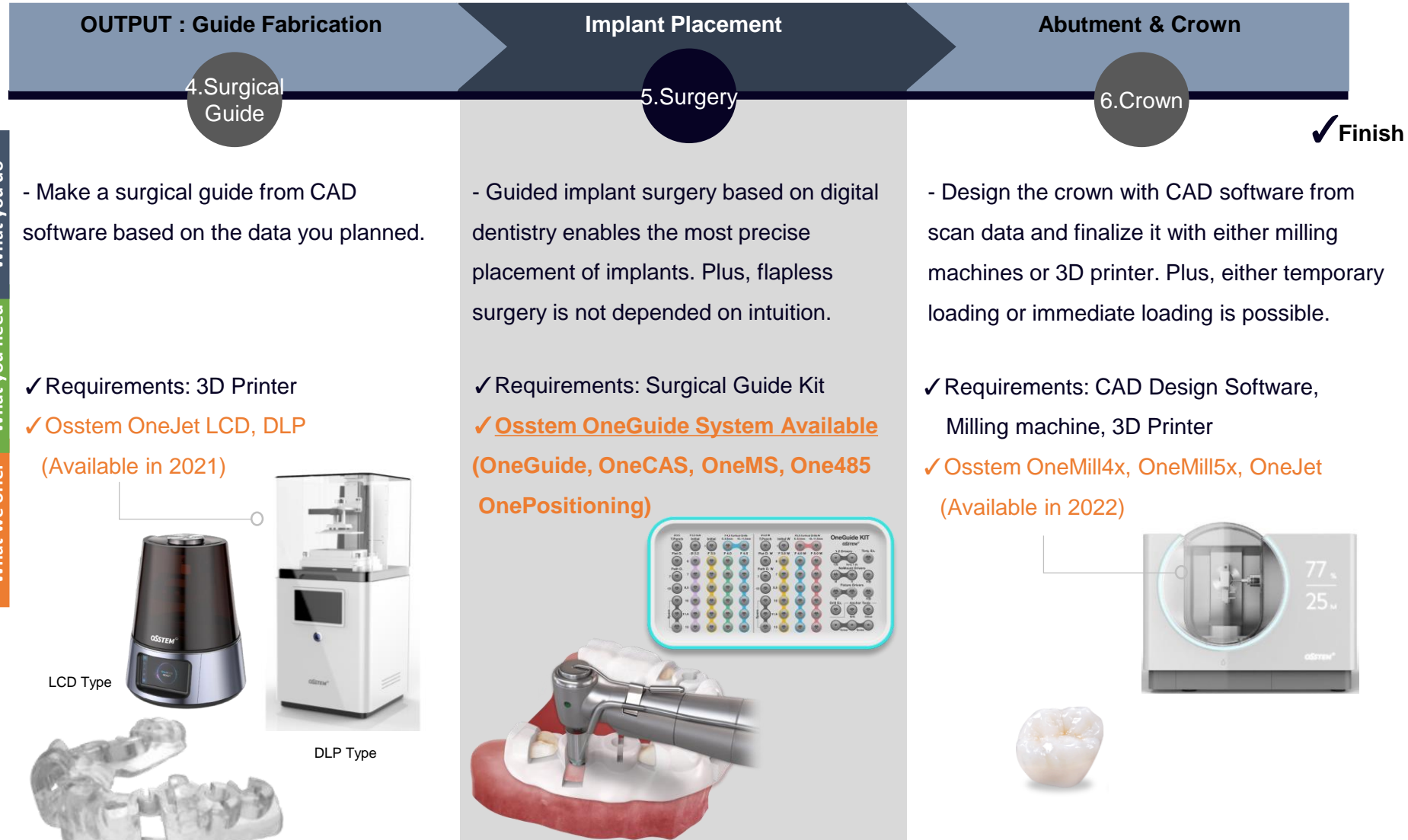


What you do

What you need

What we offer

## Guided Implant Surgery (6 Steps)

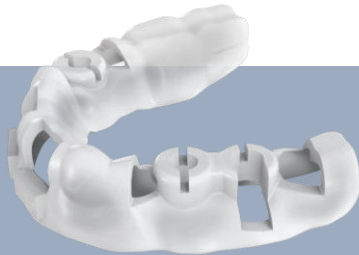




## 4. ONEGUIDE

### ■ OneGuide Template

#### 1. Sleeve Type



✓ Sleeveless

#### 2. Guide Hole Design



\*Open

○ Wide path for drill access

Closed

#### 3. Guide Hole Size

■ Ø3.6 (Narrow)

■ Ø5.1 (Regular)

■ Ø5.8 (Wide)



✓ Metal Sleeve

○ Reamer drill, jig required



Closed

■ Ø3.6 (Narrow)

■ Ø5.1 (Regular)

■ Ø5.8 (Wide)





# Digital Prosthodontics

Osstem Digital Solution

## ■ Digital Prosthodontics (3 Steps)

### INPUT : Digital Data Acquisition

#### 1. Scan

- Scan the patient's mouth with either an intraoral scanner or a model scanner.  
Scan body, Scan Healing Abt for custom abutments with its digital library.

- ✓ Requirements: Intraoral/Model Scanner
- ✓ Intraoral scanner (3Shape Trios, ...)
- Model scanner (3Shape E-series, ...)

**Osstem Scan body, Scan Healing abt.**



### DESIGN

#### 2. CAD Design

- Load the scan data into the CAD software in order to design the final crown.

- ✓ Requirements: CAD software
- ✓ 3Shape Dental System software
- exocad Dental CAD software



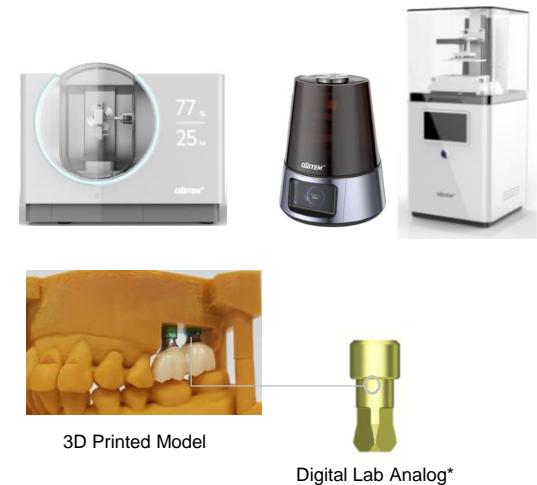
### OUTPUT : Prosthodontics

#### 3. Crown

✓ **Finish**

- Finalize the crown with either milling machines or 3D printer depending on materials.

- ✓ Requirements: Milling machine, 3D Printer
- ✓ **Osstem OneMill4x, OneMill5x, OneJet**
- Osstem Digital Lab Analog**





## ■ Digital Custom Abutment (3 types)

### Pre-milled Abutment

- Pre-milled custom abutment
- Block-type (Implant platform part milled)
- Osstem logo printed as an original Abt.

- ✓ Requirements: Milling machine
- ✓ DentalPlus O2-M4 Milling machine

#### Osstem Pre-milled Abutment (Ti)



### OneFit Abutment

- Hybrid Custom Abutment (Zirconia, Metal, Gold)
- Excellent for Esthetic Anterior area.
- Perfect fit into TS Fixture.

- ✓ Requirements: Osstem OneFit Center



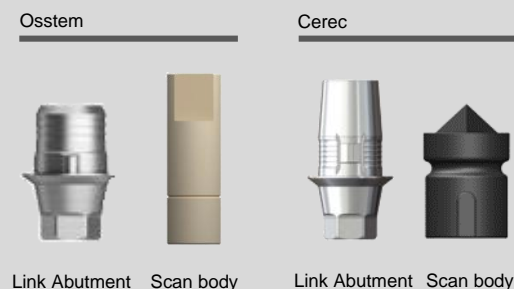
### Link Abutment

- Titanium + Zirconia Custom Abutment
- Digital library available (3shape, exocad)
- CAD/CAM process on Clinic.

- ✓ Requirements: CAD/CAM System

#### ✓ Osstem Link Abutment

#### Osstem Link Abutment for Cerec





Thank  
you.

**OSSTEM<sup>®</sup>**  
IMPLANT